



SustainAbility

Higher Trewithen Sustainability Planning

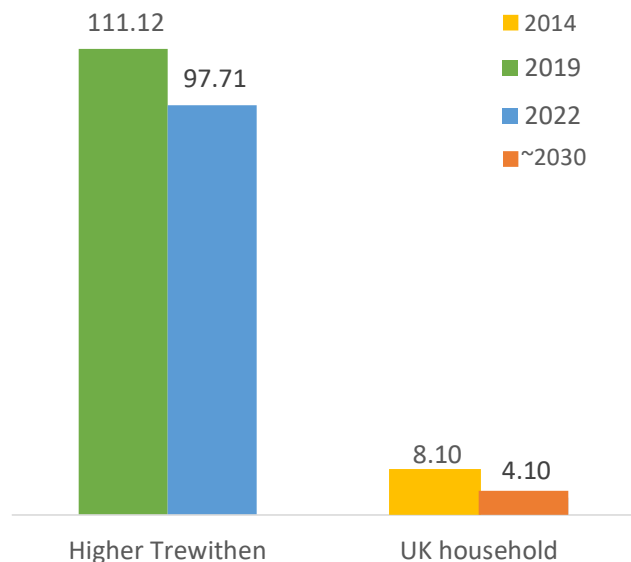
October 2023

Higher Trewithen has decreased their emissions by ~12% since 2019. This reduction has been driven by significant scope 2 action, Remaining emissions are driven by scope 3

HT 2019 and 2022 Carbon Footprint Calculation

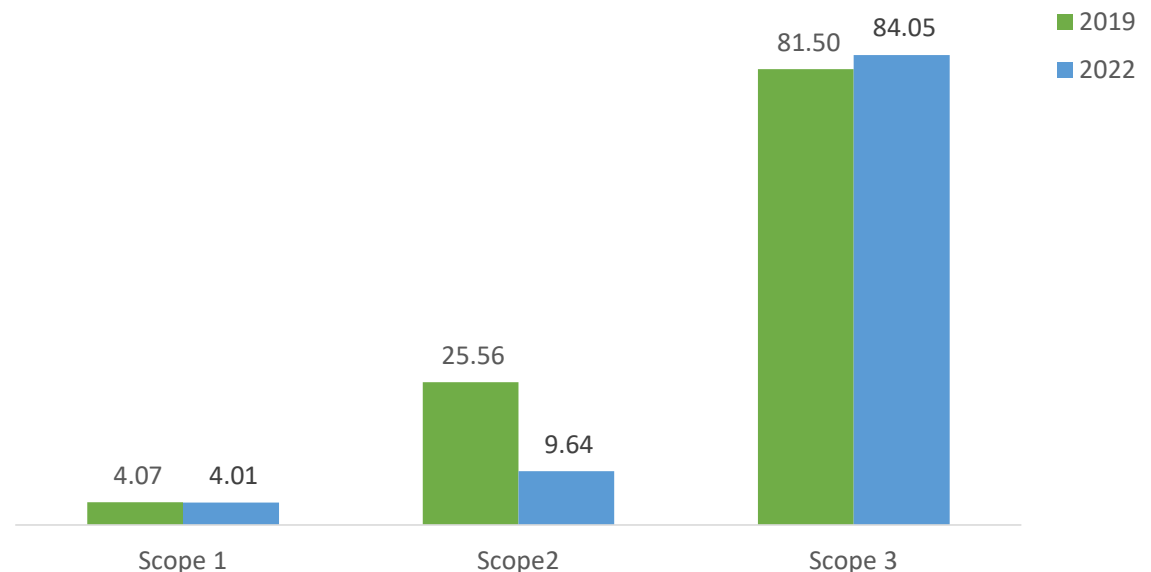
Higher Trewithen’s emissions have decreased by 12% and are ~14x of a typical 2014 UK household

Tonnes Co2e



Higher Trewithen has significantly reduced their scope 2 emissions, but has seen a small rise in scope 3 emissions

Tonnes of CO2e

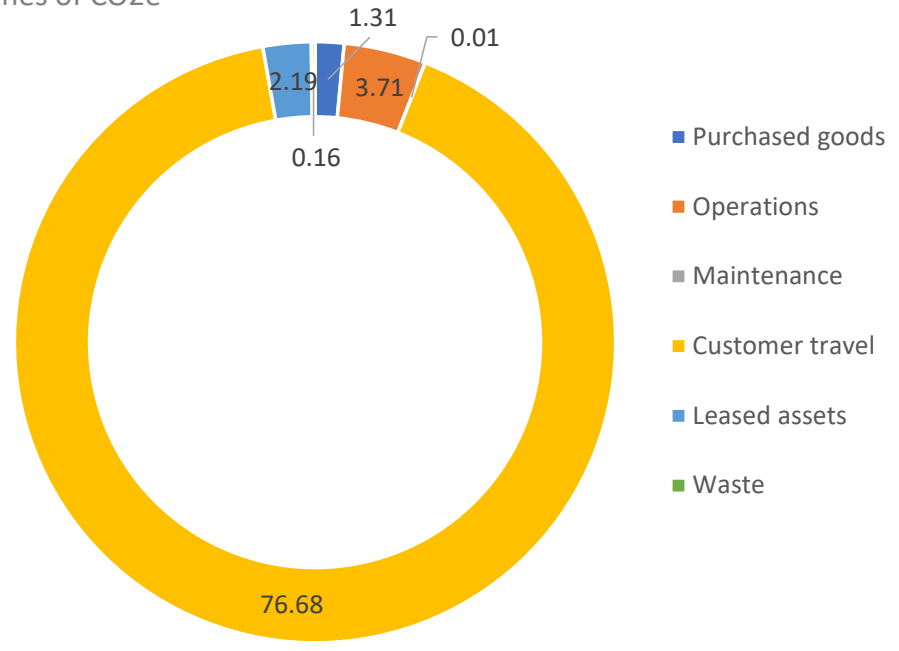


Scope 3 emissions are overwhelmingly driven by customer travel, especially customers travelling to Higher Trewithen from within the UK

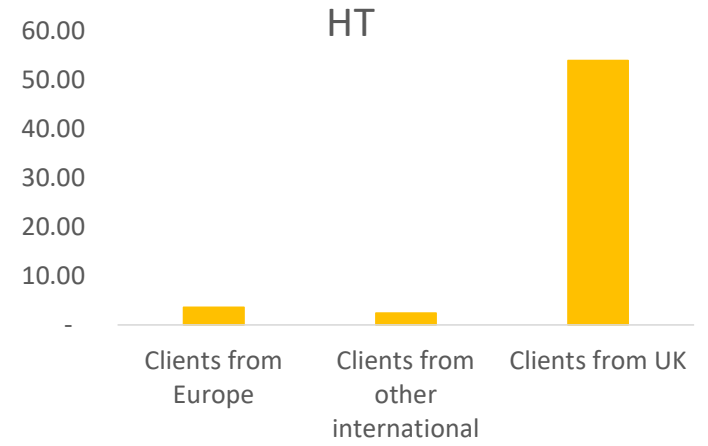
HT 2019 and 2022 Carbon Footprint Calculation

Scope 3 breakdown

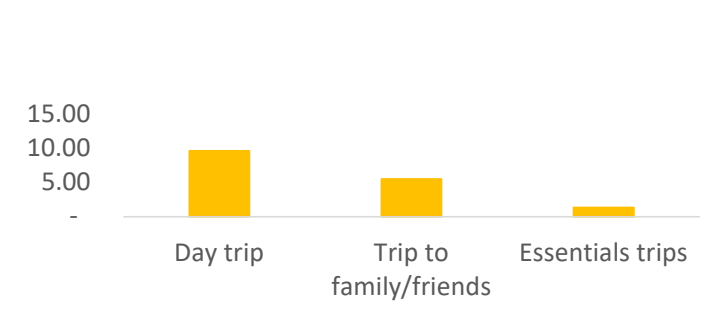
Tonnes of CO2e



Emissions from travel to & from HT



Emissions from travel at HT



Source - SustainAbility Calculations

In creating and sharing a best-quality Higher Trewithen carbon footprint the following should be noted

Generic and specific assumption statements

Generic statement –

This best-effort carbon footprint calculation is based on a set of data, assumptions & best-practice methods and strives to provide a reasonable estimate of environmental impact. It serves as a valuable starting point for understanding sustainability efforts but will be adjusted as data and methodologies evolve.

Specific notes –

- We have assumed that occupation levels, client travel styles, purchased goods and services have stayed the same since 2019
- Carbon factors have been drawn from .gov or co2everything.com
- Waste emissions are from the Cornwall country website
- The chosen baseline year is 2019

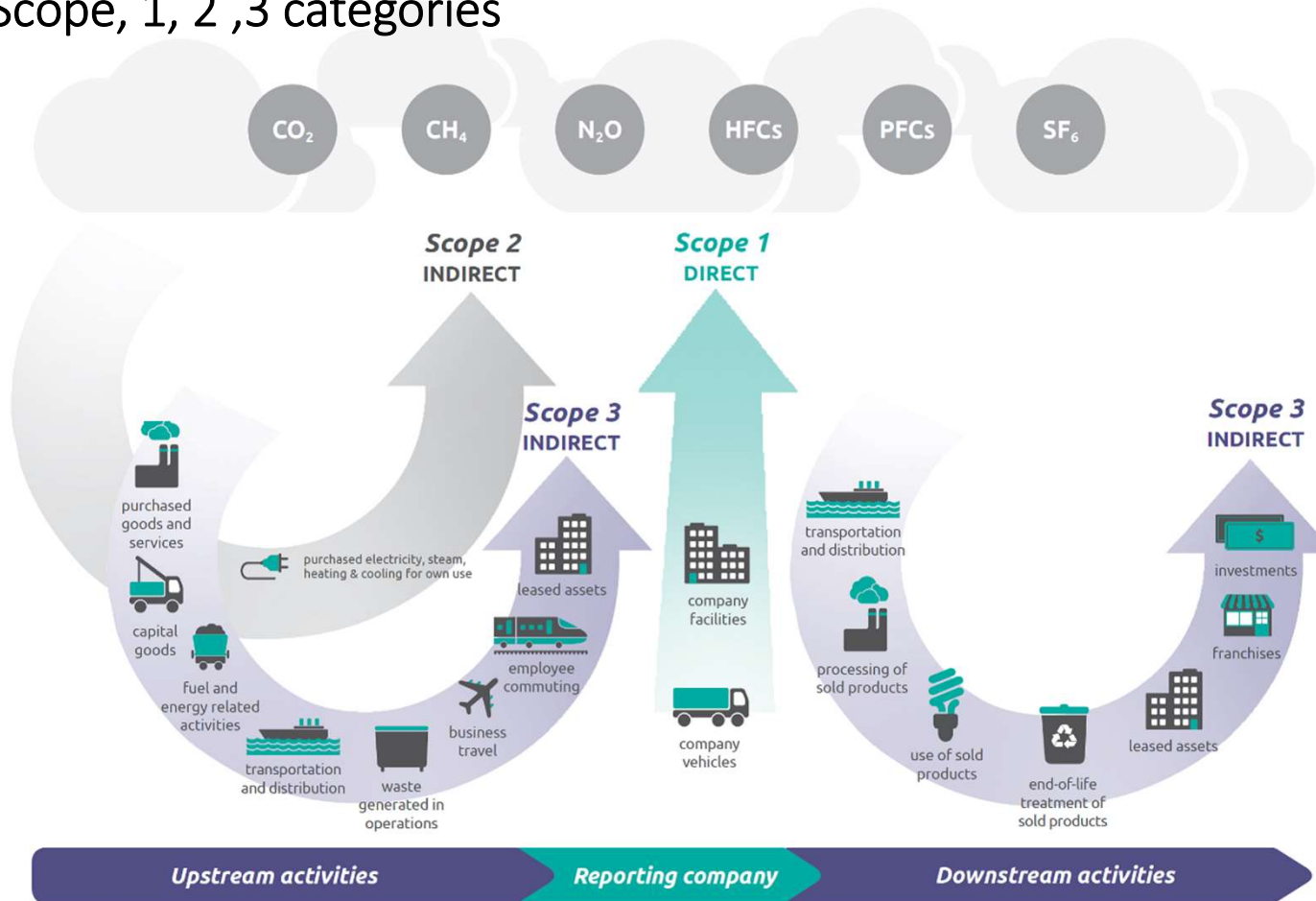
Suggestions for increasing the future accuracy of carbon foot printing

- Take note of and keep official records of all types of data needed (kwh used actuals vs estimates, services purchased)
- Directly measure live consumption KWH, water (e.g. Strata) and waste measurements for peak accuracy
- Add data as to customer journeys and methods of travel (e.g ask how they travel in feedback form)
- Share accounting records of purchased goods e.g. money spend on cleaning materials, fuel used for car
- Remove long-let from big electricity meter (note be aware of meter usage when starting studio and shop!)



SustainAbility

Reminder - Scope, 1, 2, 3 categories



Source - <https://www.epa.gov/climateleadership/scope-1-and-scope-2-inventory-guidance>